



APPS Inc. Line Monitor

The Line Monitor is a high-speed data collection system, with the power to locate and identify production line bottlenecks.



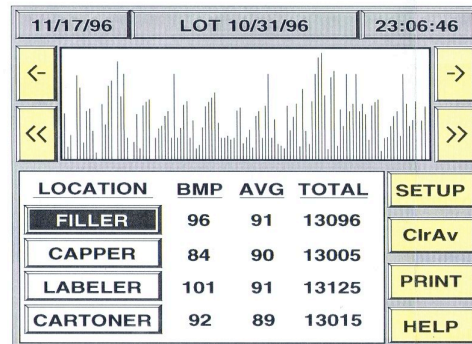
Shown: APPS, Inc. Line Monitor

The compact, self-contained unit includes sensors, processing unit, touch-screen display, software and an optional printer. Minimal installation is required, consisting mainly of mounting the sensors in strategic positions on the line. The system is then ready to collect and record units produced at all sensor locations. By comparing the graphical and numerical

read-outs at these critical points, problem areas quickly become obvious.

The Monitor

An industry hardened PC coupled with proven PLC technology provides the hardware required for reliable and accurate data collection. A simple-to-use operator interface provides easy access to current and historical information.



The Supervisor

By using APPSMON, an optional Windows based application, nearly any office PC can access up-to-date information from all the Line Monitors connected to it. With this data, production reports, downtime analysis and data archival can be easily accomplished.

